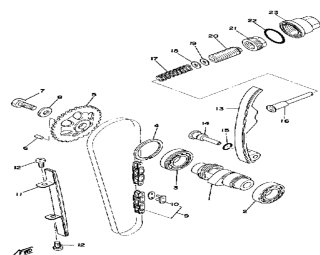


# СПИСОК УЗЛОВ ДЛЯ ЯМАНА ХТ500С

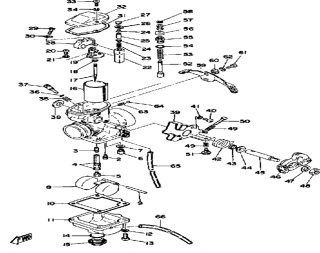
//WWW.OEM.MOTO-ALL.RU/

ТЕЛ.: +7 (495) 177-12-75



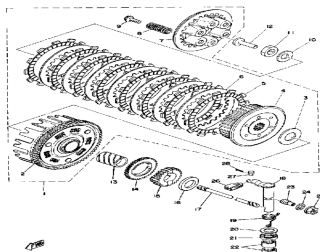
©2013 Yamaha Motor Corporation, U.S.A. All rights reserved.

Camshaft - chain tensioner



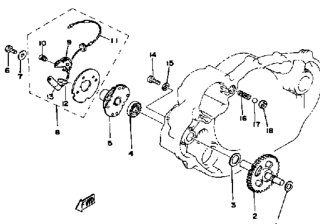
©2013 Yamaha Motor Corporation, U.S.A. All rights reserved.

Carburetor



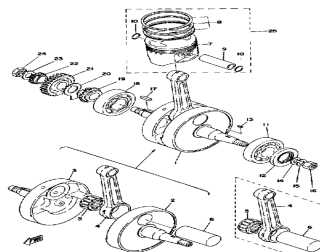
©2013 Yamaha Motor Corporation, U.S.A. All rights reserved.

Clutch



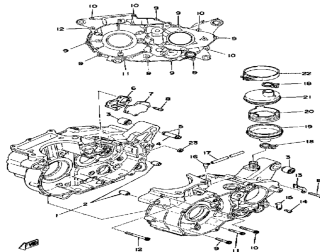
©2013 Yamaha Motor Corporation, U.S.A. All rights reserved.

Contact breaker - governor



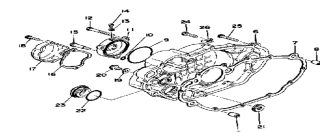
©2013 Yamaha Motor Corporation, U.S.A. All rights reserved.

Crank - piston



©2013 Yamaha Motor Corporation, U.S.A. All rights reserved.

Crankcase

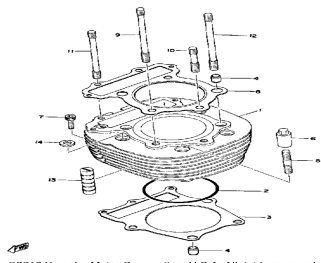


©2013 Yamaha Motor Corporation, U.S.A. All rights reserved.

Crankcase cover

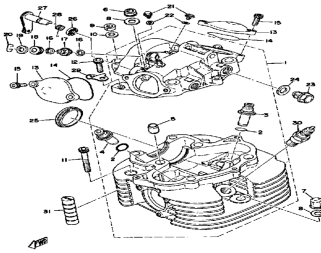


©2013 Yamaha Motor Corporation, U.S.A. All rights reserved.



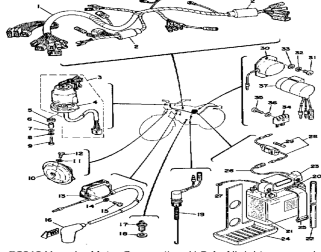
©2013 Yamaha Motor Corporation, U.S.A. All rights reserved.

Cylinder



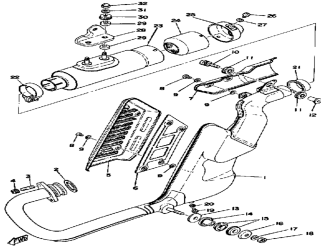
©2013 Yamaha Motor Corporation, U.S.A. All rights reserved.

Cylinder head - cylinder head cover



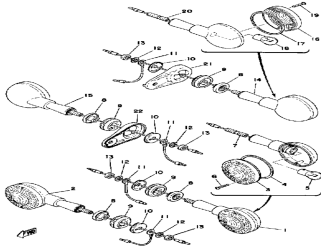
©2013 Yamaha Motor Corporation, U.S.A. All rights reserved.

Electrical



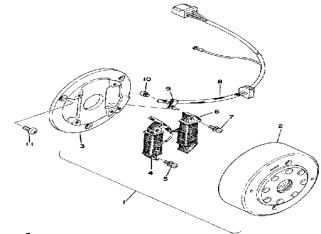
©2013 Yamaha Motor Corporation, U.S.A. All rights reserved.

Exhaust



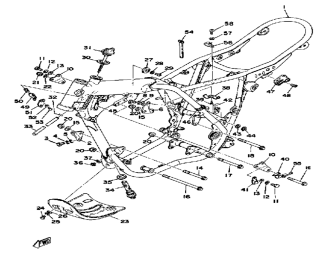
©2013 Yamaha Motor Corporation, U.S.A. All rights reserved.

Flasher light



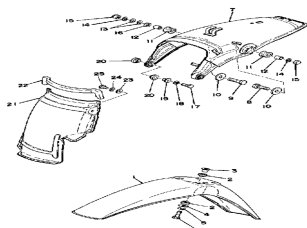
©2013 Yamaha Motor Corporation, U.S.A. All rights reserved.

Flywheel magneto



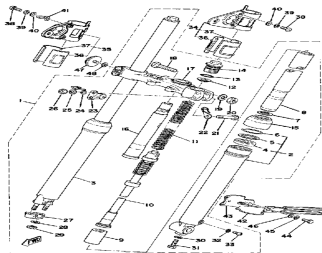
©2013 Yamaha Motor Corporation, U.S.A. All rights reserved.

Frame



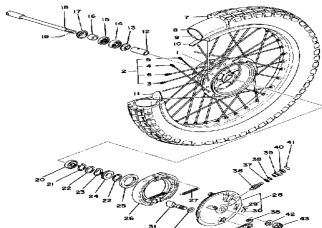
©2013 Yamaha Motor Corporation, U.S.A. All rights reserved.

Front fender - rear fender



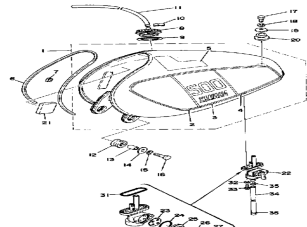
©2013 Yamaha Motor Corporation, U.S.A. All rights reserved.

Front fork



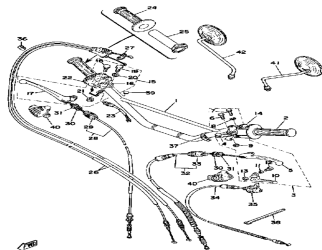
©2013 Yamaha Motor Corporation, U.S.A. All rights reserved.

Front wheel



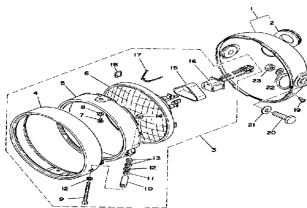
©2013 Yamaha Motor Corporation, U.S.A. All rights reserved.

Fuel tank



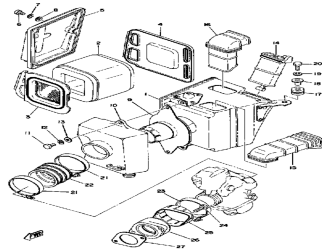
©2013 Yamaha Motor Corporation, U.S.A. All rights reserved.

Handle - wire



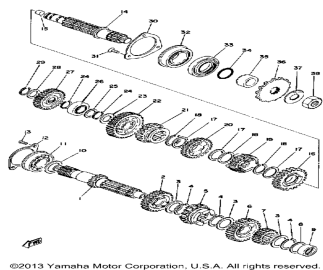
©2013 Yamaha Motor Corporation, U.S.A. All rights reserved.

Headlight



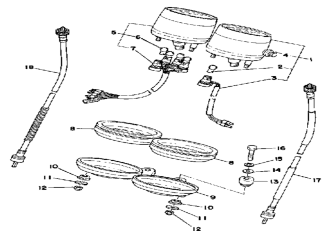
©2013 Yamaha Motor Corporation, U.S.A. All rights reserved.

Intake



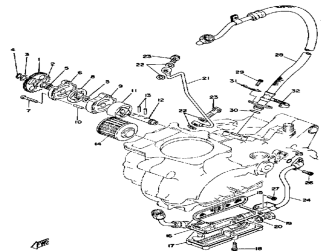
©2013 Yamaha Motor Corporation, U.S.A. All rights reserved.

Kick - starter



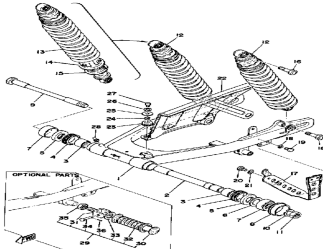
©2013 Yamaha Motor Corporation, U.S.A. All rights reserved.

Meter



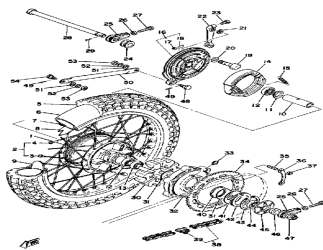
©2013 Yamaha Motor Corporation, U.S.A. All rights reserved.

Oil pump - oil cleaner



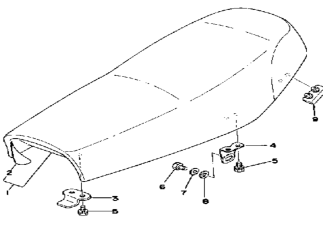
©2013 Yamaha Motor Corporation, U.S.A. All rights reserved.

Rear arm - rear cushion - chain case



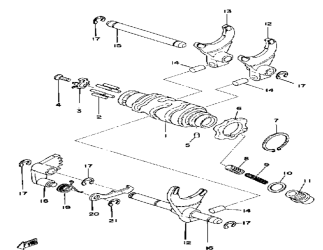
©2013 Yamaha Motor Corporation, U.S.A. All rights reserved.

Rear wheel



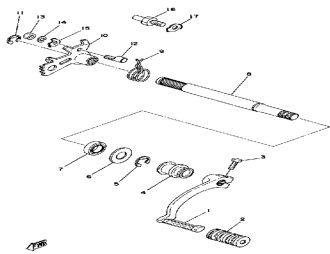
©2013 Yamaha Motor Corporation, U.S.A. All rights reserved.

Seat



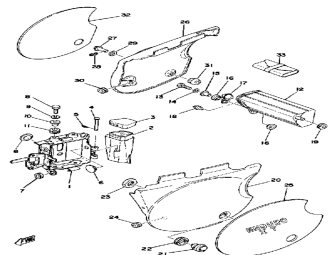
©2013 Yamaha Motor Corporation, U.S.A. All rights reserved.

Shift cam - fork



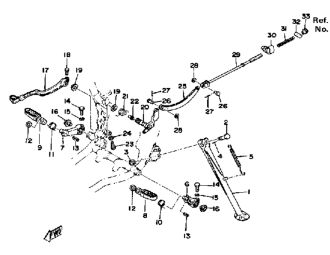
©2013 Yamaha Motor Corporation, U.S.A. All rights reserved.

Shift shaft



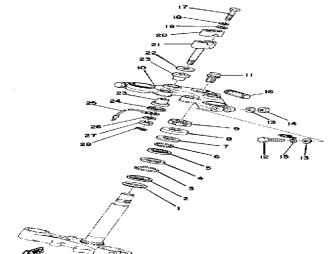
©2013 Yamaha Motor Corporation, U.S.A. All rights reserved.

Side cover - battery box



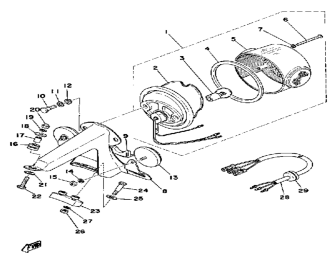
©2013 Yamaha Motor Corporation, U.S.A. All rights reserved.

Stand - footrest - brake pedal



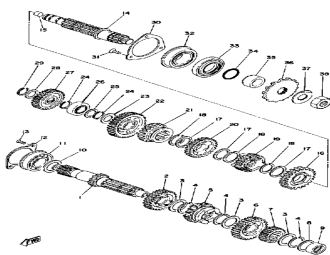
©2013 Yamaha Motor Corporation, U.S.A. All rights reserved.

Steering



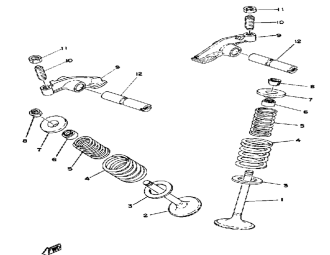
©2013 Yamaha Motor Corporation, U.S.A. All rights reserved.

Taillight



©2013 Yamaha Motor Corporation, U.S.A. All rights reserved.

Transmission



©2013 Yamaha Motor Corporation, U.S.A. All rights reserved.

Valve - rocker arm